

**ARMY
NAVY**

**TM 11-7010-201-20P
ET821-AA-PLO-01 0/E154 MTS**

**ORGANIZATIONAL MAINTENANCE
REPAIR PARTS AND SPECIAL TOOLS LIST
FOR
TEST SET, ELECTRONIC CIRCUIT PLUG-IN
UNIT
TS-331 7()/TSQ-73
(NSN 1430-01-033-1078)**

HEADQUARTERS, DEPARTMENT OF THE ARMY AND THE NAVY

8 JULY 1985

TECHNICAL MANUAL
NO. 11-7010-201-20P
TECHNICAL MANUAL
NO. ET821-AA-PL0-010/E154 MTS

DEPARTMENTS OF THE ARMY
AND THE NAVY

Washington, DC, 8 July 1985

**ORGANIZATIONAL MAINTENANCE
REPAIR PARTS AND SPECIAL TOOLS LIST
FOR
TEST SET, ELECTRONIC CIRCUIT PLUG-IN UNIT
TS-331 7()/TSQ-73
(NSN 1430-01-033-1078)
Current as of 14 February 1985**

REPORTING ERRORS AND RECOMMENDING IMPROVEMENTS

You can help improve this manual. If you find any mistakes or if you know of a way to improve the procedures, please let us know. Mail your letter, DA Form 2028 (Recommended Changes to Publications and Blank Forms), or DA Form 2028-2 located in back of this manual direct to: Commander, US Army Communications-Electronics Command and Fort Monmouth, ATTN: AMSEL-ME-MP, Fort Manmouth, NJ 07703-5007.

For Navy, mail comments to the Commander, Naval Electronics Systems Command, ATTN: ELEX 8122, Washington, DC 20360.

In either case, a reply will be furnished direct to you.

Table of Contents

SECTION	GROUP	Description	Page	Illus Figure
	I.	Introduction	1	
	II.	Repair Parts List	1	
	00	Test Set, Electronic Circuit Plug-In Unit TS-3317()/TSQ-73		
	01	0101 Printed Circuit Cards Circuit Card Assembly, 10282752	18-1	1
		Circuit Card Assembly, 10282772	19-1	19
		Circuit Card Assembly, 10282793	40-1	40
		0102 DC/DC Converter Assy PSi, PS2, 126649-101	55-5	55
		Circuit Card Assembly	59-1	59
		0103 Test Assembly Plug-In Unit, Wired, 10281449	60-1	60
		010301 Switch-Indicator Assembly, 10281450 (No parts authorized)		
		010302 Card Rack Assembly RH, LH, Analog (No parts authorized)		
		010303 Wire Harness Cable Assembly W552, W553, W554, W556 (No parts authorized)		
	02	Power Supply 135V (See Group 01 for parts)		
		0201 Power Cable, AC and DC, (See Group 01 for parts)		
	03	Probe Assembly, Test Set W209		
		Probe Assembly, Test Set W209, 10285061	69-1	69
	04	Cable Assembly, Special Purpose W210 (See Group 01 for parts)		
	05	MTS Test Aid Assembly, TE113980	73-1	73
		0501 Circuit Board Assembly, TE113987 (No parts authorized)		
		0502 Front Panel Assembly (See Group 05 for parts)		
		0503 Cable Assembly, TE113988 (No parts authorized)		
SECTION	III.	Special Tools List (Not applicable)		
	IV.	National Stock Number and Part Number Index	1-1	

SECTION I

INTRODUCTION

1. Scope

This manual lists and authorizes spares and repair parts; special tools; special test, measurement, and diagnostic equipment (TMDE); and other special support equipment required for performance of organizational, maintenance of the TS-3317()/TSQ-73. It authorizes the requisitioning, issue, and disposition of spares, repair parts and special tools as indicated by the source, maintenance and recoverability (SMR) codes.

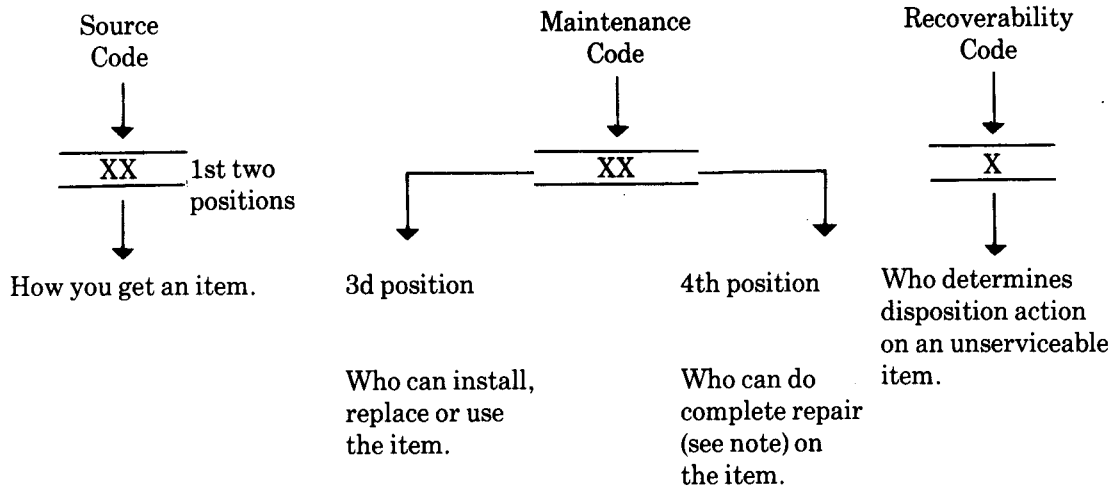
2. General

This Repair Parts and Special Tools List is divided into the following sections:

- a. Section II. Repair Parts List. A list of spares and repair parts authorized by this RPSTL for use in the performance of maintenance. The list also includes parts which must be removed for replacement of the authorized parts. Parts lists are composed of functional groups in ascending numeric sequence, with the parts in each group listed in ascending item number sequence. Figure numbers are listed directly beneath the group header.
- b. Section III. Special Tools List. Not applicable.
- c. Section IV. National Stock Number and Part Number Index. A list, in National item identification number (NIIN) sequence, of all National stock numbered items appearing in the listing, followed by a list in alphameric sequence of all part numbers appearing in the listings. National stock numbers and part numbers are cross-referenced to each illustration figure and item number appearance.

3. Explanation of Columns (Section II and III)

- a. Item No. (Column (1)). Indicates the number used to identify items called out in the illustration.
- b. SMR Code (Column (2)). The source, maintenance, and recoverability (SMR) code is a five-position code containing supply/requisitioning information, maintenance category authorization criteria, and disposition instruction, as shown in the following breakout:



NOTE

Complete repair: Maintenance capacity, capability, and authority to perform all corrective maintenance tasks of the "Repair" function in a use/user environment in order to restore serviceability to a failed item.

(1) Source code. The source code tells you how to get an item needed for maintenance, repair, or overhaul of an end item/equipment. Explanations of source codes follows:

<i>Code</i>	<i>Explanation</i>
<div style="border: 1px solid black; padding: 5px; display: inline-block;"> PA PB PC PD PE PF PG </div>	Stocked items; use the applicable NSN to request/requisition items with these source codes. They are authorized to the category indicated by the code entered in the third position of the SMR code.

NOTE

Items coded PC are subject to deterioration.

<i>Code</i>	<i>Explanation</i>
<div style="border: 1px solid black; padding: 5px; display: inline-block;"> KD KF KB </div>	Items with these codes are not to be requested/requisitioned individually. They are part of a kit which is authorized to the maintenance category indicated in the third position of the SMR code. The complete kit must be requisitioned and applied.

<i>Code</i>	<i>Explanation</i>
<div style="border: 1px solid black; padding: 5px; display: inline-block;"> MO—Made at org/ AVUM category MF—Made at DS/ AVUM category MH—Made at GS category ML—Made at Specialized Repair Activity (SRA) MD—Made at Depot </div>	Items with these codes are not to be requested/requisitioned individually. They must be made from bulk material which is identified by the part number in the description and usable on code (UOC) column and listed in the Bulk Material group of the repair parts list. If the item is authorized to you by the third position code of the SMR code, but the source code indicates it is made at a higher category, order the item from the higher category of maintenance.

<i>Code</i>	<i>Explanation</i>
<div style="border: 1px solid black; padding: 5px; display: inline-block;"> AO —Assembled by org/AVUM category AF —Assembled by DS/AVUM category AH —Assembled by GS category AL —Assembled by SRA AD —Assembled by Depot </div>	Items with these codes are not to be requested/requisitioned individually. The parts that make up the assembled item must be requisitioned or fabricated and assembled at the category of maintenance indicated by the source code. If the disposition code of the SMR code authorizes you to replace the item, but the source code indicates the item is assembled at a higher category, order the item from the higher category of maintenance.

<i>Code</i>	<i>Explanation</i>
XA	Do not requisition an "XA" coded item. Order its next higher assembly.
XB	If an "XB" item is not available from salvage, order it using the RICM and part number given.
XC	Installation drawing, diagram, instruction sheet, field service drawing, that is identified by manufacturer's part number.
XD	Item is not stocked. Order an "XD" coded item through normal supply channels using the FSCM and part number given, if no NSN is available.

NOTE

Cannibalization or controlled exchange, when authorized, may be used as a source of supply for items with the above source codes, except for those source coded "XA" or those aircraft support items restricted by requirements of AR 750-1.

(2) Maintenance code. Maintenance codes tell you the category of maintenance authorized to USE and REPAIR support items. The maintenance codes are entered in the third and fourth positions of the SMR code as follows:

(a) The maintenance code entered in the third position tells you the lowest maintenance category authorized to remove, replace, and use an item. The maintenance code entered in the third position will indicate authorization to one of the following categories of maintenance.

<i>Code</i>	<i>Application/Explanation</i>
-------------	--------------------------------

- C - Crew or operator maintenance done within organizational or aviation maintenance.
- O - Organizational or aviation unit category can remove, replace, and use the item.
- F - Direct support or aviation intermediate category can remove, replace, and use the item.
- H - General support category can remove, replace, and use the item.
- L - Specialized repair activity can remove, replace, and use the item.
- D - Depot category can remove, replace, and use the item.

(b) The maintenance code entered in the fourth position tells whether or not the item is to be repaired and identifies the lowest maintenance category with the capability to do complete repair (i.e., perform all authorized repair functions). This position will contain one of the following maintenance codes.

NOTE

Some limited repair may be done on the item at a lower category of maintenance, if authorized by the Maintenance Allocation Chart (MAC) and SMR codes.

<i>Code</i>	<i>Application/Explanation</i>
-------------	--------------------------------

- O - Organizational or aviation unit is the lowest category that can do complete repair of the item.
- F - Direct support or aviation intermediate is the lowest category that can do complete repair of the item.
- H - General support is the lowest category that can do complete repair of the item.
- L - Specialized repair activity (designate the specialized repair activity) is the lowest category that can do complete repair of the item.
- D - Depot is the lowest category that can do complete repair of the item.
- Z - Nonreparable. No repair is authorized.
- B - No repair is authorized. (No parts or special tools are authorized for the maintenance of a "B" coded item). However, the item may be reconditioned by adjusting, lubricating, etc., at the user category.

(3) Recoverability code. Recoverability codes are assigned to items to indicate the disposition action on unserviceable items. The recoverability code is entered in the fifth position of the SMR Code as follows:

Recoverability

<i>Codes</i>	<i>Application/Explanation</i>
--------------	--------------------------------

- Z - Nonreparable Item. When unserviceable, condemn and dispose of the item at the category of maintenance shown in the third position of SMR code.
- O - Repairable item. When uneconomically repairable, condemn and dispose of the item at organizational or aviation unit category.
- F - Repairable item. When uneconomically repairable, condemn and dispose of the item at direct support or aviation intermediate category.
- H - Repairable item. When uneconomically repairable, condemn and dispose of the item at general support category.
- D - Repairable item. When beyond lower category repair capability, return to depot. Condemnation and disposal of item not authorized below depot category.
- L - Repairable item. Condemnation and disposal not authorized below specialized repair activity (SRA).

A - Item requires special handling or condemnation procedures because of specific reasons (e.g., precious metal content, high dollar value, critical material, or hazardous material). Refer to appropriate manuals/directives for specific instructions.

c. FSCM (Column (3)). The Federal Supply Code for Manufacturer (FSCM) is a 5-digit numeric code which is used to identify the manufacturer, distributor, or Government agency, etc., that supplies the item.

d. Part Number (Column (4)). Indicates the primary number used by the manufacturer (individual, company, firm, corporation, or Government activity), which controls the design and characteristics of the item by means of its engineering drawings, specifications, standards, and inspection requirements to identify an item or range of items.

NOTE

When you use a NSN to requisition an item, the item you receive may have a different part number from the part ordered.

e. Description and Usable on Code (UOC) (Column (5)). This column includes the following information.

(1) The Federal item name and, when required, a minimum description to identify the item.

(2) The statement "END OF FIGURE" appears just below the last item description in Column (5) for a given figure in both section II and section III.

f. Qty (Column (6)). Indicates the quantity of the item used in the breakout shown on the illustration figure, which is prepared for a functional group, subfunctional group, or an assembly. A "V" appearing in this column in lieu of a quantity indicates that the quantity is variable and the quantity may vary from application to application.

4. Explanation of Columns (Section IV)

a. National Stock Number (NSN) Index.

(1) Stock number column. This column lists the NSN by National item identification number (NIIN) sequence. The NIIN consists of the last nine digits of the NSN. When using this column to locate an item, ignore the first four digits of the NSN. When requisitioning items use the complete NSN (13 digits).

(2) Fig. column. This column lists the number of the figure where the item is identified/located. The illustrations are in numerical sequence in sections II and III.

(3) Item column. The item number identifies the item associated with the figure listed in the adjacent Fig. column. This item is also identified by the NSN listed on the same line.

b. Part Number Index. Part numbers in this index are listed by part number in ascending alphanumeric sequence.

(1) FSCM column. This column lists the Federal supply code for manufacturer (FSCM).

(2) Part number column. This column indicates the part number assigned to the item.

(3) Stock number column. This column lists the National stock number for the associated part number and manufacturer identified in the part number and FSCM columns to the left.

(4) Fig. column. This column lists the number of the figure where the item is identified/located in sections II and III.

(5) Item column. The item number is that number assigned to the item as it appears in the figure referenced in the adjacent figure number column.

5. Special Information

a. Associated Publications. The publications listed below pertain to the TS-3317()/TSQ-73 and its components: TM 11-7010-201-12, Test Set, Electronic Circuit Plug-In Unit TS-3317()/TSQ-73 b. Illustrations - Listing. The illustrations in this RPSTL are identical to those published in TM 11-7010201-40P. Only those parts coded "C" or "O" in the third position of the SMR code are listed in the tabular listings; therefore, there may be a break in the item number sequence, figure number and page number. Only illustrations containing organizational or aviation unit authorized items appear in the RPSTL.

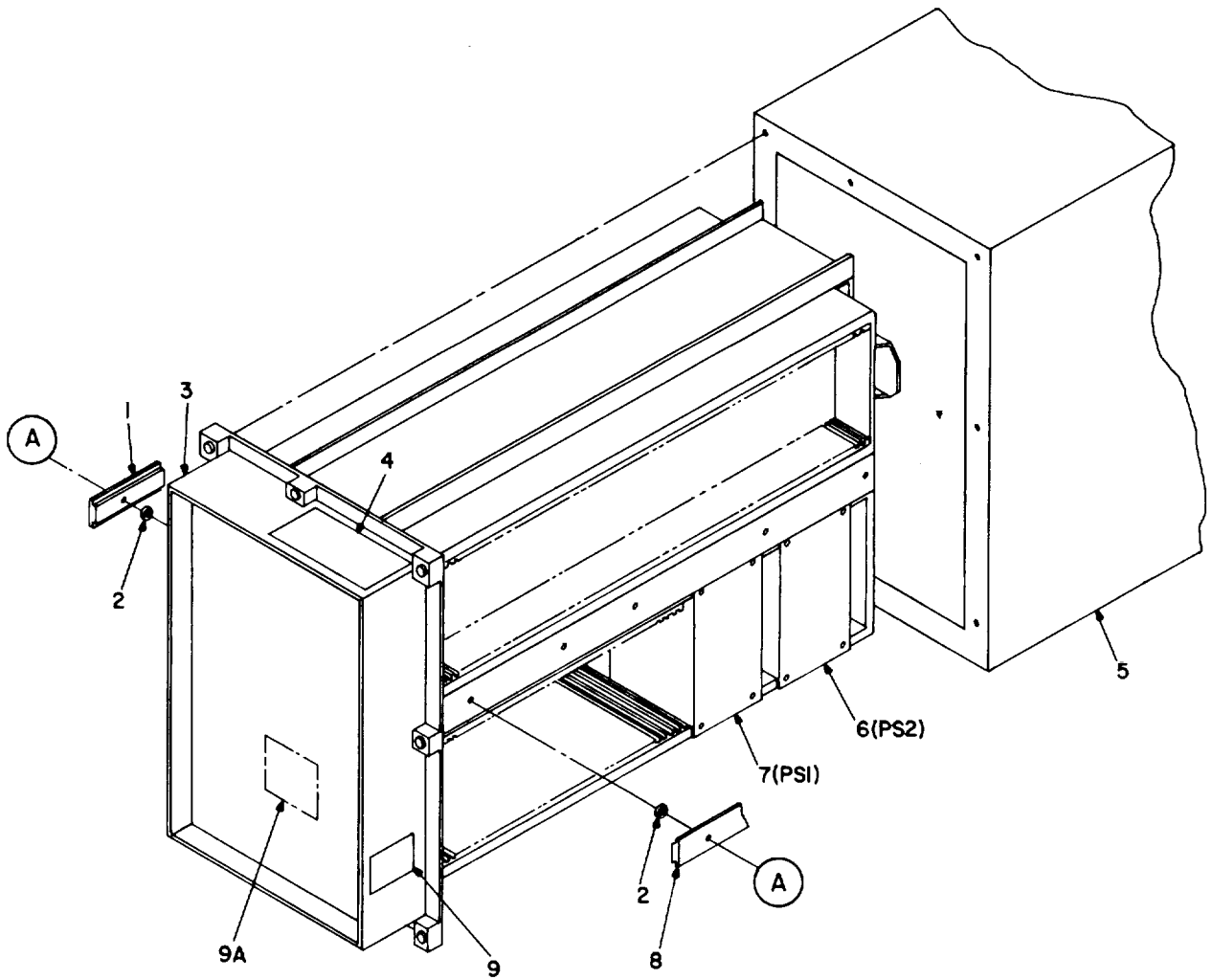
c. National Stock Numbers. National stock numbers (NSN's) that are missing from P source coded items have been applied for and will be added to this TM by future change/revision when they are entered in the Army Master Data File (AMDF). Until the NSN's are established and published, submit exception requisitions to: Commander, US Army Communications-Electronics Command and Fort Monmouth, ATTN: AMSELMM, Fort Monmouth, NJ 07703-5006 for the part required to support your equipment.

6. How to Locate Repair Parts

- a. When National stock number or part number is not known.
 - (1) First. Using the table of contents, determine the assembly group or subassembly group to which the item belongs. This is necessary since figures are prepared for assembly groups and subassembly groups, and listings are divided into the same groups.
 - (2) Second. Find the figure covering the assembly group or subassembly group to which the item belongs.
 - (3) Third. Identify the item on the figure and note the item number.
 - (4) Fourth. Refer to the Repair Parts List for the figure to find the part number for the item number noted on the figure.
 - (5) Fifth. Refer to the Part Number Index to find the NSN, if assigned.
- b. When National stock number or part number is known.
 - (1) First. Using the index of National stock numbers and part numbers, find the pertinent National stock number or part number. The NSN index is in National item identification number (NIIN) sequence (para 4a(1)). The part numbers in the part number index are listed in ascending alphameric sequence (para 4b). Both indexes cross-reference you to the illustration figure and item number of the item you are looking for.
 - (2) Second. After finding the figure and item number, verify that the item is the one you're looking for, then locate the item number in the repair parts list for the figure.

7. Abbreviations

Not applicable



SEE SHEET 5 OF 5 FOR ENCIRCLED DETAILS.

EL8FJ001

Figure 1. Module test set (Sheet 1 of 5).

	1102
1103	
	1104
1105	
	1106
1107	
	1108
1109	
	1110
1111	
	1112
1113	
	1114
1115	
	1116
1117	
	1118
1119	
	1120
1121	
	1122
1123	
	1124
1125	
	1126
1127	
	1128
1129	
	1130
1131	
	1132
1133	
	1134
1135	
	1136
1137	
	1138
1139	
	1140
1141	
	1142
	1144

SLOT ASSIGNMENT	ITEM NO.
1102	10
1103	11
1104	12
1105	13
1106	14
1107	15
1108	16
1109	15
1110	17
1111	18
1112	12
1113	11
1114	19
1115	16
1116	12
1117	11
1118	20
1119	21
1120	22
1121	23
1122	24
1123	25
1124	26
1125	16
1126	15
1127	12
1128	11
1129	27
1130	13
1131	28
1132	29
1133	12
1134	11
1135	15
1136	20
1137	30
1138	31
1139	31
1140	13
1141	12
1142	11
1144	32

EL8FJ002

Figure 1. Module test set (Sheet 2 of 5).

	2106
2107	
	2108
2109	
	2110
2111	
	2112
2113	
	2114
2115	
	2116
2117	
	2118
2119	
	2120
2121	
	2122
2123	
	2124
2125	
	2126
2127	
	2128
2129	
	2130
2131	
	2132
2133	
	2134
2135	
	2136
2137	
	2138
2139	
	2140
2141	
	2142
2143	
	2144
2145	
	2146
2147	

SLOT ASSIGNMENT	ITEM NO.
2106	11
2107	30
2108	12
2109	11
2110	30
2111	11
2112	12
2113	30
2114	11
2115	11
2116	12
2117	15
2118	17
2119	17
2120	17
2121	33
2122	34
2123	35
2124	12
2125	20
2126	11
2127	20
2128	12
2129	20
2130	36
2131	11
2132	20
2133	37
2134	11
2135	14
2136	12
2137	38
2138	12
2139	16
2140	15
2141	11
2142	39
2143	11
2144	13
2145	17
2146	17
2147	17

EL8FJ003

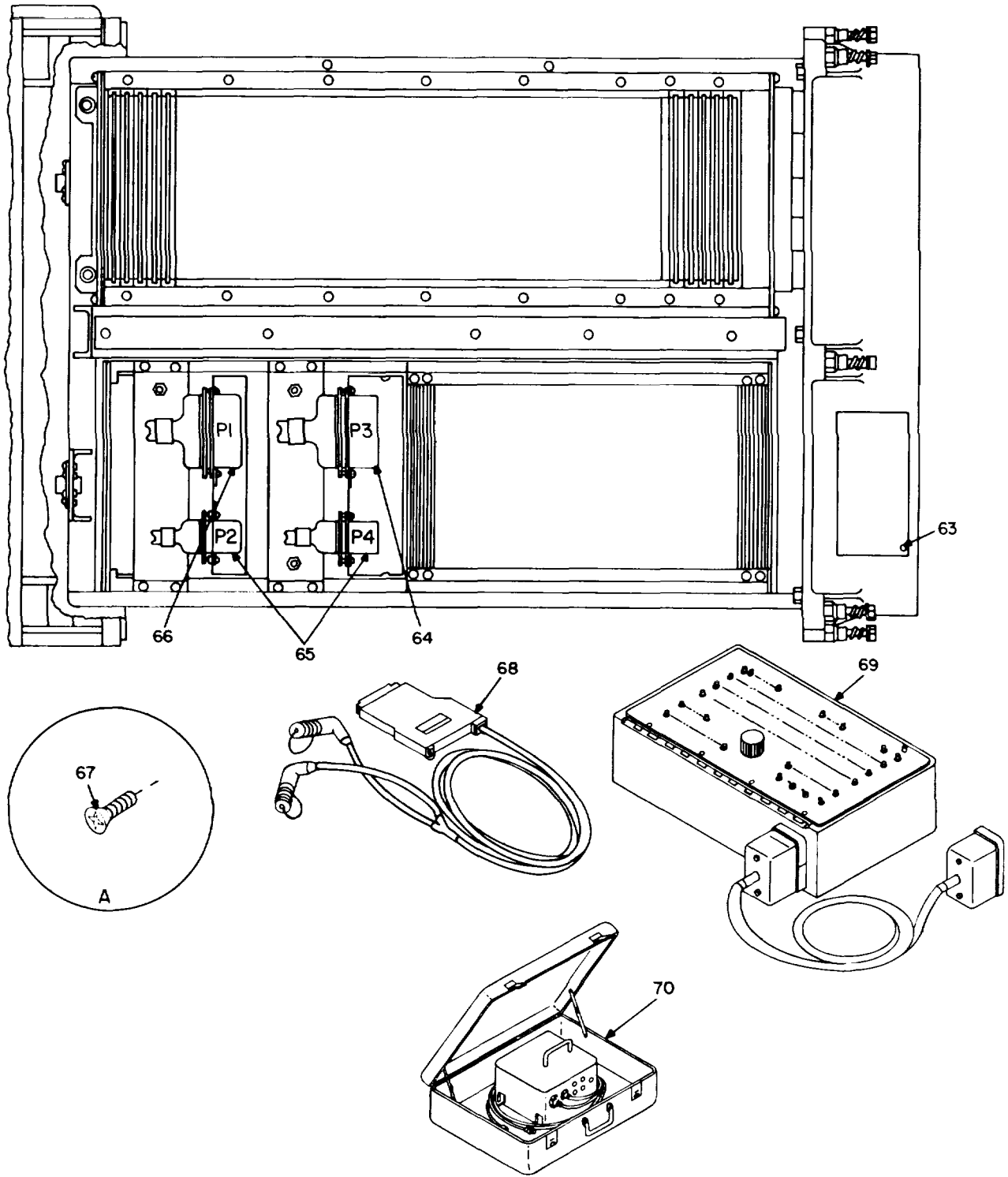
Figure 1. Module test set (Sheet 3 of 5).

3105	3104
	3106
3107	
	3108
3109	
	3110
3111	
	3112
3113	
	3114
3115	
	3116
3117	
	3118
3119	
	3120
3121	
	3122
3123	
	3124
3125	
	3126
3127	

SLOT ASSIGNMENT	ITEM NO.
3104	40
3105	40
3106	41
3107	42
3108	43
3109	44
3110	45
3111	46
3112	47
3113	48
3114	49
3115	50
3116	51
3117	52
3118	53
3119	54
3120	55
3121	56
3122	57
3123	58
3124	59
3125	60
3126	61
3127	62

EL8FJ004

Figure 1. Module test set (Sheet 4 of 5).



ELBFJ005

Figure 1. Module test set (Sheet 5 of 5).

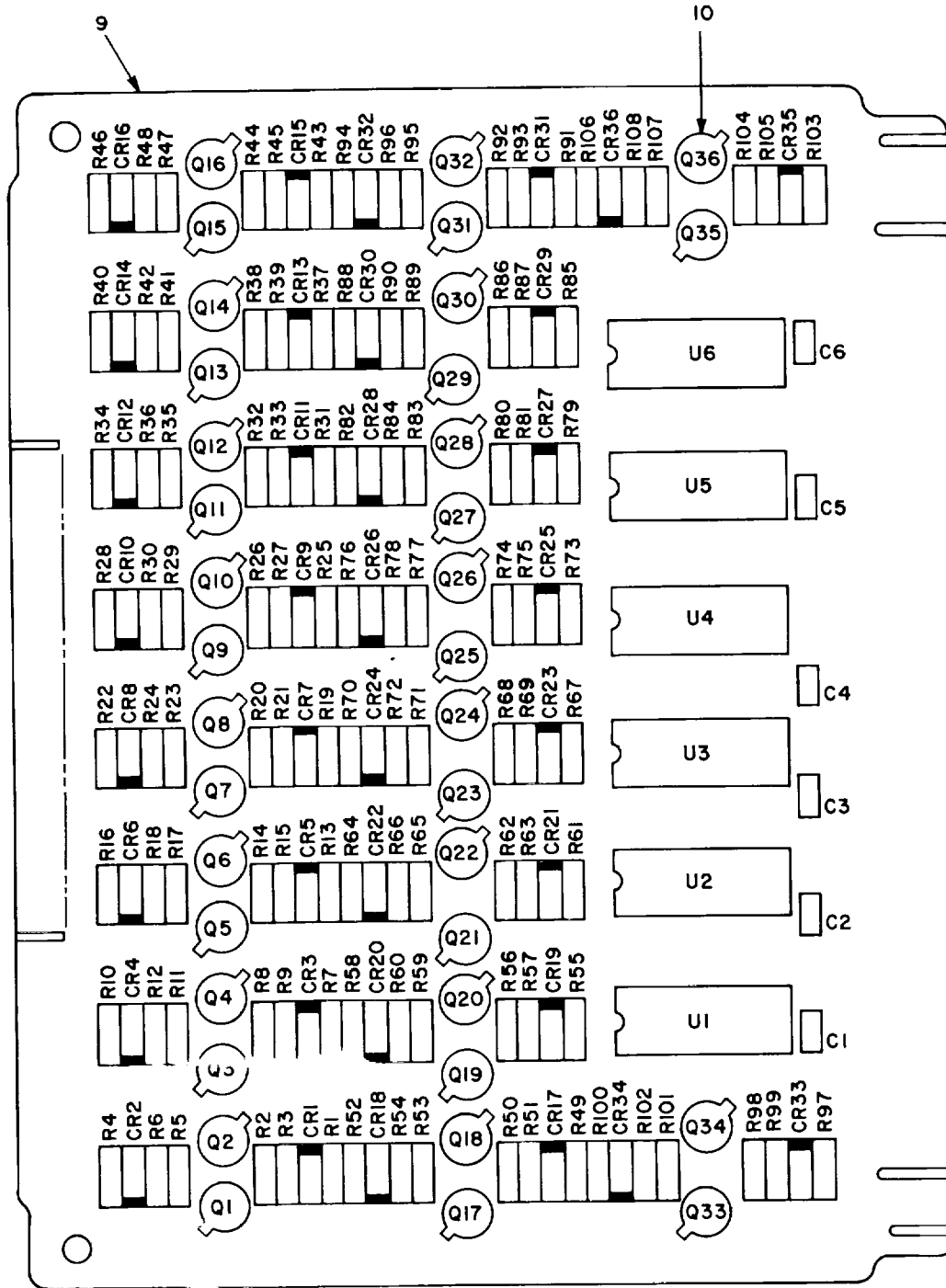
SECTION II

TM11-7010-201-20P

(1) ITEM NO	(2) SMR CODE	(3) FSCM	(4) PART NUMBER	(5) DESCRIPTION AND USABLE ON CODES (UOC)	(6) QTY
GROUP 01 MODULE SET					
FIG.1					
5	ADODD	13973	10284883-1	CASE-MODULE TEST SE.....	1
6	PAODD	13973	126649-101	CONVERTER ASSEMBLY	1
7	XBODD	13973	126650-102	POWER SUPPLY	1
10	PAOLL	13973	587100-102	CIRCUIT CARD ASSEMB	1
11	PAOLL	13973	587102-102	CIRCUIT CARD ASSEMB	16
12	PAOLL	13973	587117-102	CIRCUIT CARD ASSEMB	13
13	PAOLL	13973	587105-102	CIRCUIT CARD ASSEMB	4
14	PAOLL	13973	587104-102	CIRCUIT CARD ASSEMB	2
15	PAOLL	13973	587103-102	CIRCUIT CARD ASSEMB	6
16	PAOLL	13973	10281602	CIRCUIT CARD ASSEMB	4
17	PAOLL	13973	10281606	CIRCUIT CARD ASSEMB	7
18	PAOLL	18876	10282779	TEST SET CONTROL, ME.....	1
19	PAOLL	13973	10281780	CIRCUIT CARD ASSEMB	1
20	PAOLL	13973	587118-100	CIRCUIT CARD ASSEMB	6
21	PAOLL	18876	10282780	TEST CONTROL MEMORY	1
22	PAOLL	18876	10282781	TEST SET CONTROL, ME.....	1
23	PAOLL	18876	10282782	TEST SET CONTROL, ME.....	1
24	PAOLL	18876	10282783	TEST SET CONTROL, ME.....	1
25	PAOLL	18876	10282784	TEST SET CONTROL, ME.....	1
26	PAOLL	18876	10282785	TEST SET CONTROL, ME.....	1
27	PAOHH	13973	587119-100	CIRCUIT CARD ASSEMB	1
28	PAOLL	18876	10282786	TEST SET CONTROL, ME.....	1
29	PAOLL	13973	587108-102	CIRCUIT CARD ASSEMB	1
30	PAOLL	13973	587106-102	CIRCUIT CARD ASSEMB	4
31	PAOLL	13973	587128-100	CIRCUIT CARD ASSEMB	2
32	PAOZZ	18876	10283505	PRINTED WIRING BOAR	1
33	PAOLL	18876	10282787	TEST SET CONTROL, ME.....	1
34	PAOLL	18876	10282788	TEST SET CONTROL, ME.....	1
35	PAOLL	18876	10282789	TEST SET CONTROL, ME.....	1
36	PAOLL	18876	10282790	TEST SET CONTROL, ME.....	1
37	PAOLL	18876	10282791	TEST SET CONTROL, ME.....	1
38	PAOLL	18876	10282792	TEST SET CONTROL, ME.....	1
39	PAOLL	13973	10282793	CIRCUIT CARD ASSEMB	1
40	PAOLL	18876	10282752	CIRCUIT CARD ASSEMB	2
41	PAOLL	18876	10281785	CIRCUIT CARD ASSEMB	1
42	PAOLL	18876	10282794	TEST SET DATA COMPA.....	1
43	PAOLL	18876	10282795	TEST SET DATA COMPA.....	1
44	PAOLL	18876	10282796	TEST SET DATA COMPA.....	1
45	PAOLL	18876	10282797	TEST SET DATA COMPA.....	1
46	PAOLL	13973	10282798	TEST SET DATA COMPA.....	1
47	PAOLL	18876	10282799	TEST SET DATA COMPA.....	1
48	PAOLL	18876	10282800	TEST SET DATA	1
49	PAOLL	18876	10282801	TEST SET DATA COMPA.....	1
50	PAOLL	18876	10282802	TEST SET DATA COMPA.....	1
51	PAOLL	18876	10282803	TEST SET DATA COMPA.....	1
52	PAOLL	18876	10282804	TEST SET DATA COMPA.....	1
53	PAOLL	18876	10282805	TEST SET DATA COMPA.....	1

SECTION II					
(1)	(2)	(3)	(4)	(5)	(6)
ITEM	SMR		PART		
NO	CODE	FSCM	NUMBER	DESCRIPTION AND USABLE ON CODES (UOC)	QTY
54	PAOLL	18876	10281784	CIRCUIT CARD ASSEMB	1
55	PAOLL	18876	10282771	TEST SET DATA MEMOR	1
56	PAOLL	18876	10282772	TEST SET DATA MEMOR	1
57	PAOLL	18876	10282773	TEST SET DATA MEMOR	1
58	PAOLL	18876	10282774	TEST SET DATA MEMOR	1
59	PAOLL	18876	10282775	TEST SET DATA MEMOR	1
60	PAOLL	18876	10282776	TEST SET DATA MEMOR	1
61	PAOLL	18876	10282777	TEST SET DATA MEMOR	1
62	PAOLL	18876	10282778	TEST SET DATA MEMOR	1
68	PAODD	18876	10285061	PROBE ASSEMBLY, TEST	1
69	PAOHH	13973	TE113980	MTS DISPLAY BOX.....	1
70	PAOLL	04655	02-510843	POWER SUPPLY	1

END OF FIGURE

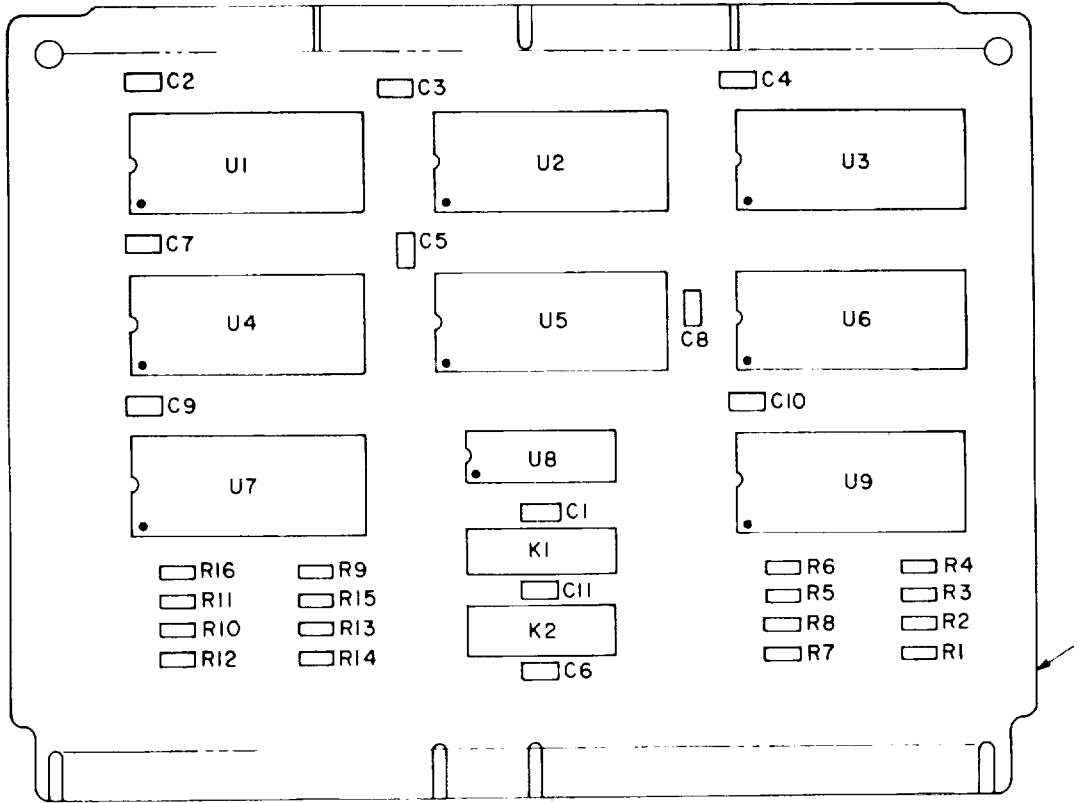


EL4QV022

Figure 18. Circuit card assy, 10282752 .

SECTION II					
(1)	(2)	(3)	(4)	(5)	(6)
ITEM	SMR	FSCM	PART	DESCRIPTION AND USABLE ON CODES (UOC)	QTY
NO	CODE		NUMBER		
				GROUP 0101 CIRCUIT CARD ASSY, 10282752	
				FIG.18	
9	PAOLL	18876	10283578	PRINTED WIRING BD.....	1

END OF FIGURE

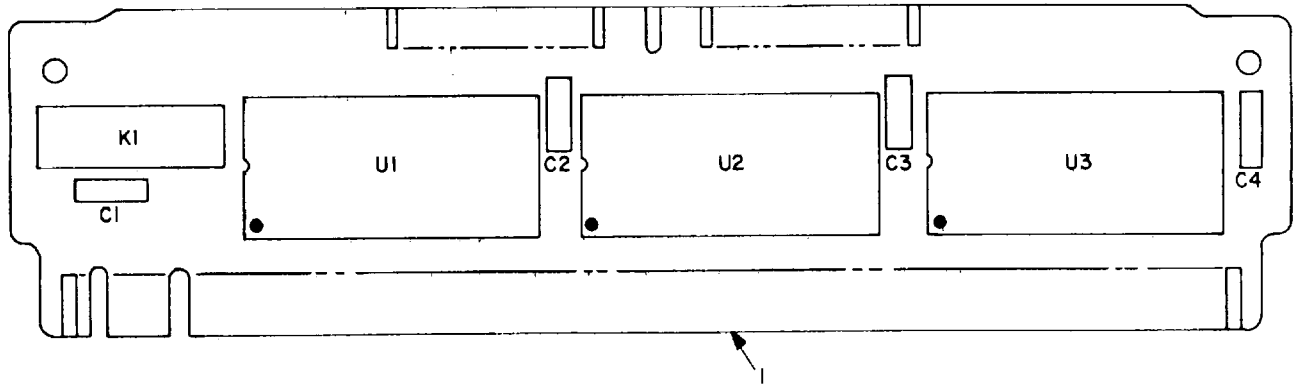


EL4QV024

Figure 19. Circuit card assy, 10282772.

SECTION II					
(1)	(2)	(3)	(4)	(5)	(6)
ITEM	SMR		PART		
NO	CODE	FSCM	NUMBER	DESCRIPTION AND USABLE ON CODES (UOC)	QTY
				GROUP 0101 CIRCUIT CARD ASSY, 10282772	
				FIG.19	
1	XAOLL	13973	10283518	CIRCUIT CARD ASSY	1

END OF FIGURE

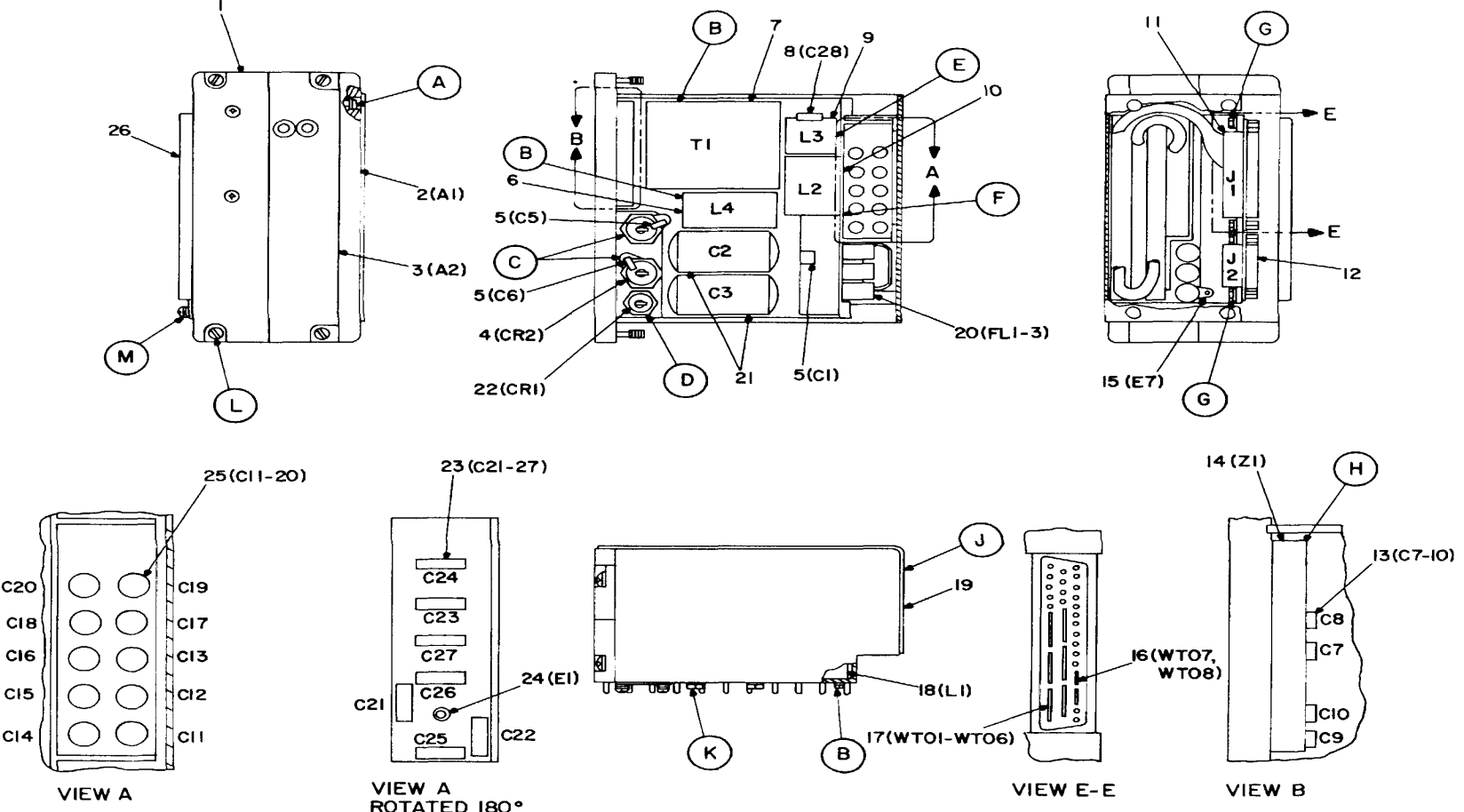


EL4QV045

Figure 40. Circuit card assy, 10282793.

SECTION II					
(1)	(2)	(3)	(4)	(5)	(6)
ITEM	SMR	FSCM	PART	DESCRIPTION AND USABLE ON CODES (UOC)	QTY
NO	CODE	FSCM	NUMBER		
				GROUP 0101 CIRCUIT CARD ASSY, 10282793	
				FIG.40	
1	PAOLL	13973	10283519	CIRCUIT CARD ASSY	1

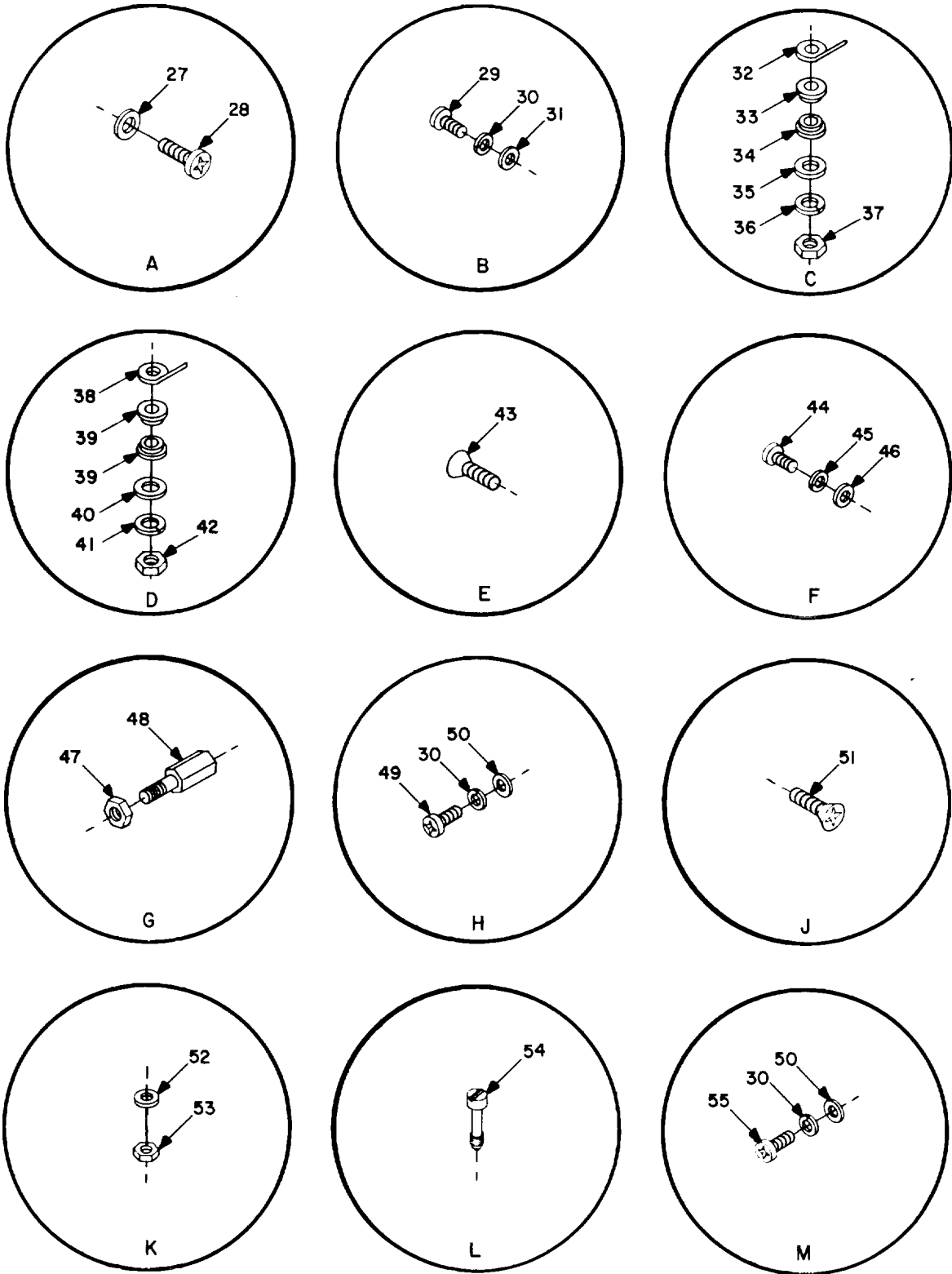
END OF FIGURE



SEE SHEET 2 OF 2 FOR ENCIRCLED DETAILS
PREFIX REFERENCE DESIGNATIONS WITH PS2

EL4QV060

Figure 55. DC/DC converter, 126649-101 (Sheet 1 of 2).

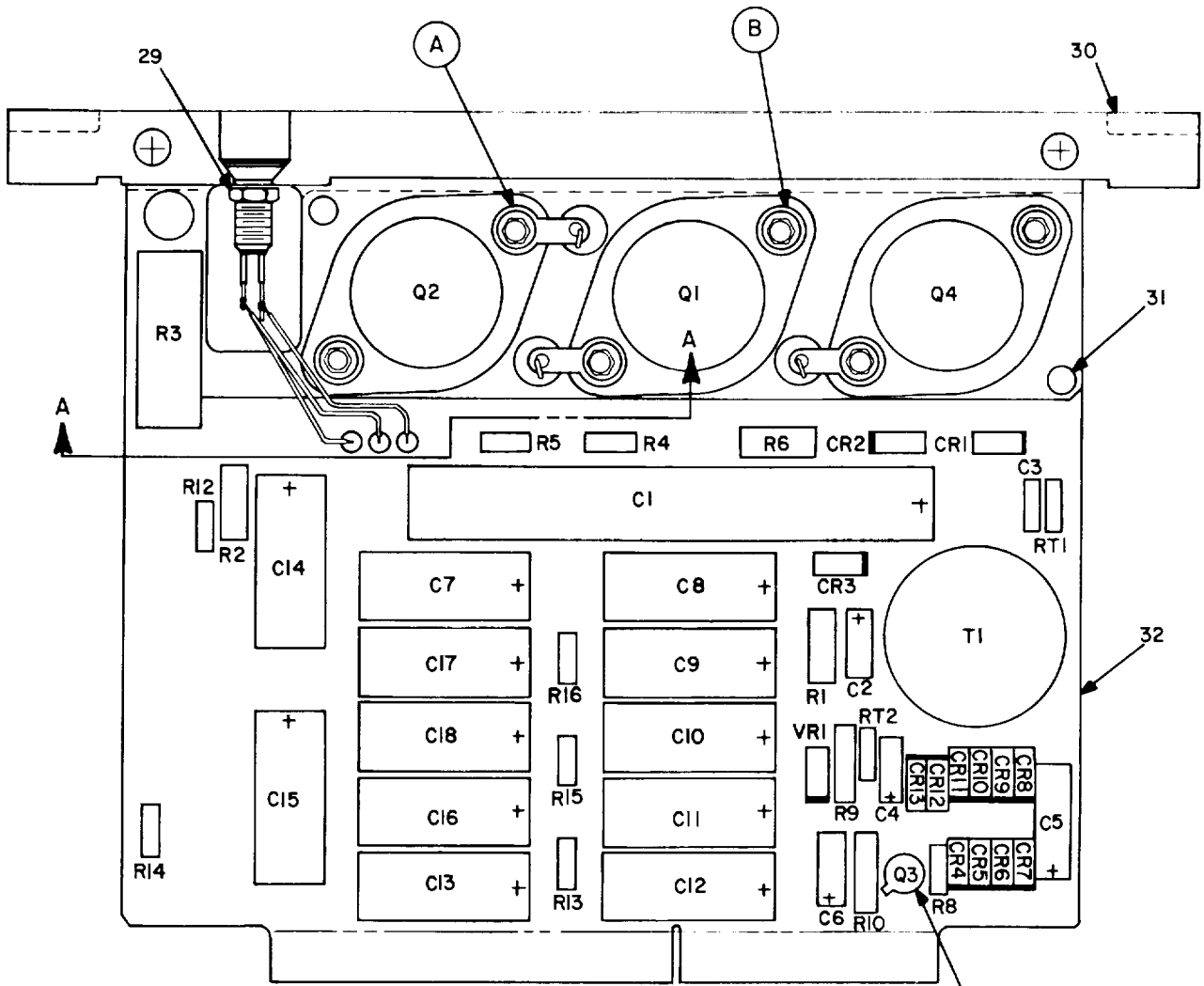


EL4QV061

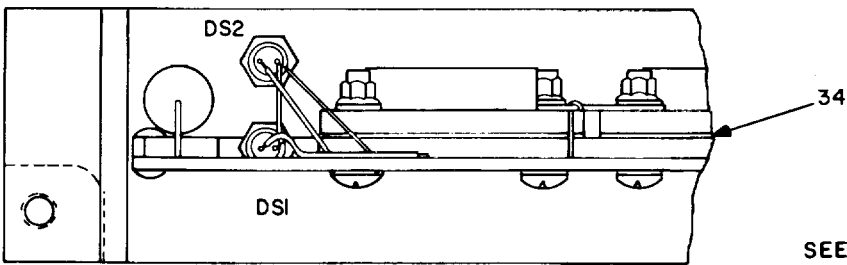
Figure 55. DC/DC converter, 126649-101 (Sheet 2 of 2)

SECTION II					
(1)	(2)	(3)	(4)	(5)	(6)
ITEM	SMR	FSCM	PART	DESCRIPTION AND USABLE ON CODES (UOC)	QTY
NO	CODE		NUMBER		
				GROUP 0102 DC/DC CONVERTER PS2, 126649-101	
				FIG.55	
3	PAODD	13973	126543-100	POWER SUPPLY SUBASS	1
54	XBOZZ	13973	867088-002	SCREW	4

END OF FIGURE



PREFIX REFERENCE DESIGNATIONS WITH PSIA2



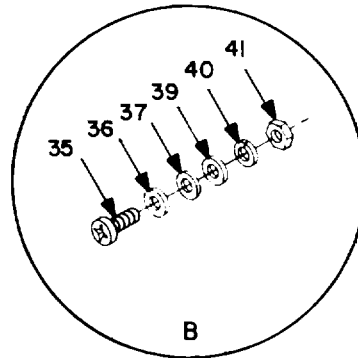
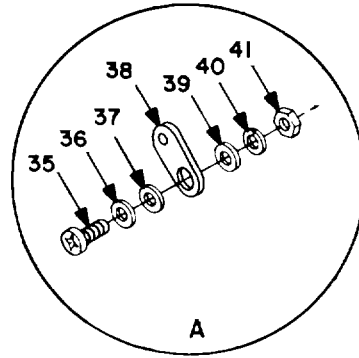
SEE SHEET 2 OF 2 FOR ENCIRCLED DETAILS.

SECTION A-A

EL4QV067

Figure 59. Circuit card assy, 126514-100 (Sheet 1 of 2).

REF. DES.	ITEM NO.
CR1-3	1
CR4-13	2
C1	3
C2	4
C3	5
C4	4
C5	6
C6	7
C7-13	8
C14-16	9
C17,18	10
DS1,2	11
Q1,2	12
Q3	13
Q4	14
RT1,2	15
R1	16
R2	17
R3	18
R4,5	19
R6	20
R8	21
R9	22
R10	23
R12	24
R13	21
R14,15	25
R16	26
T1	27
VR1	28

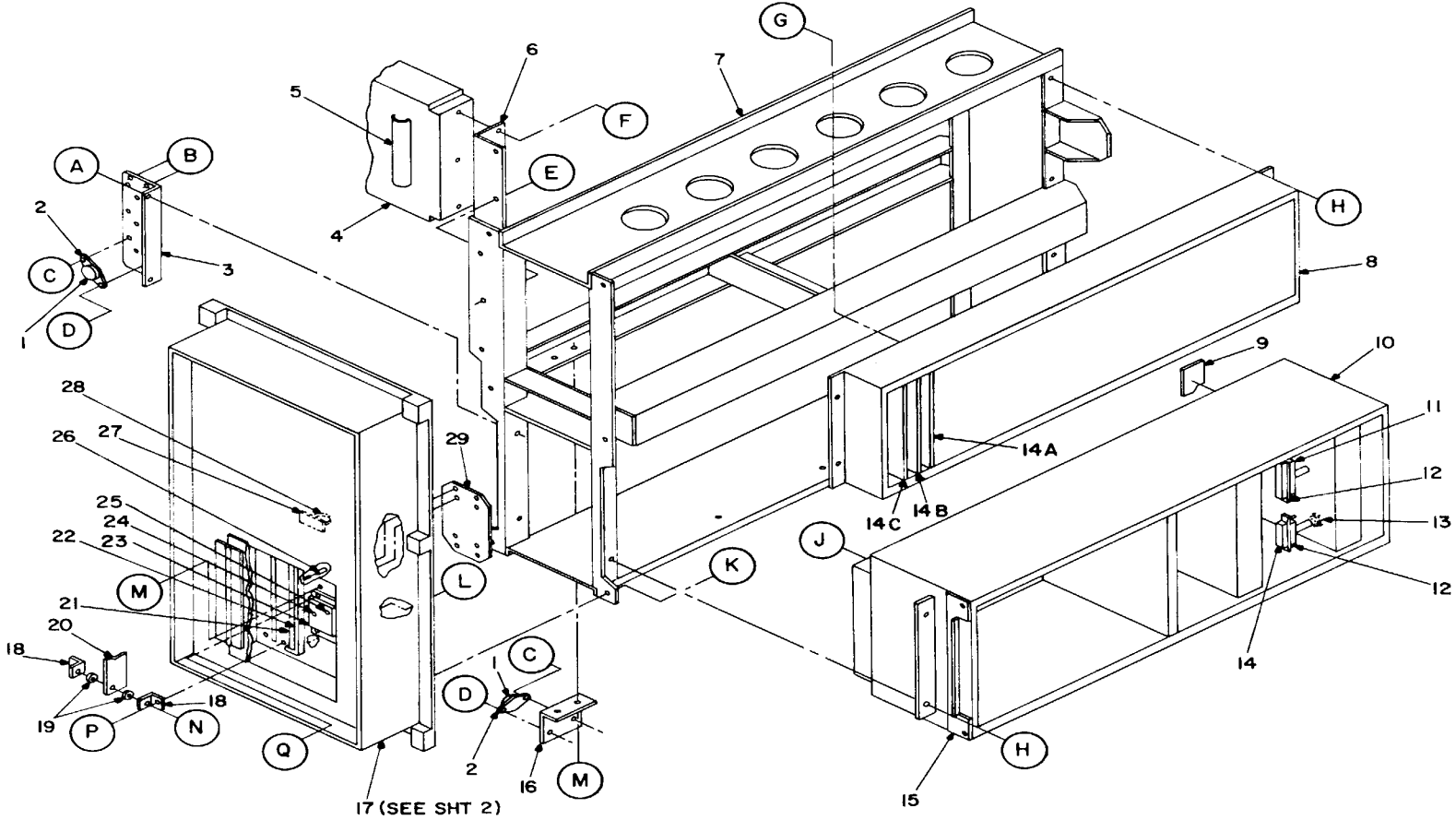


EL4QV068

Figure 59. Circuit card assy, 126514-100 (Sheet 2 of 2).

SECTION II					
(1)	(2)	(3)	(4)	(5)	(6)
ITEM	SMR	FSCM	PART	DESCRIPTION AND USABLE ON CODES (UOC)	QTY
NO	CODE		NUMBER		
				GROUP 0102 CIRCUIT CARD ASSY, 126514-100	
				FIG.59	
11	PAOZZ	13973	865380-0001	LIGHT, INDICATOR	2

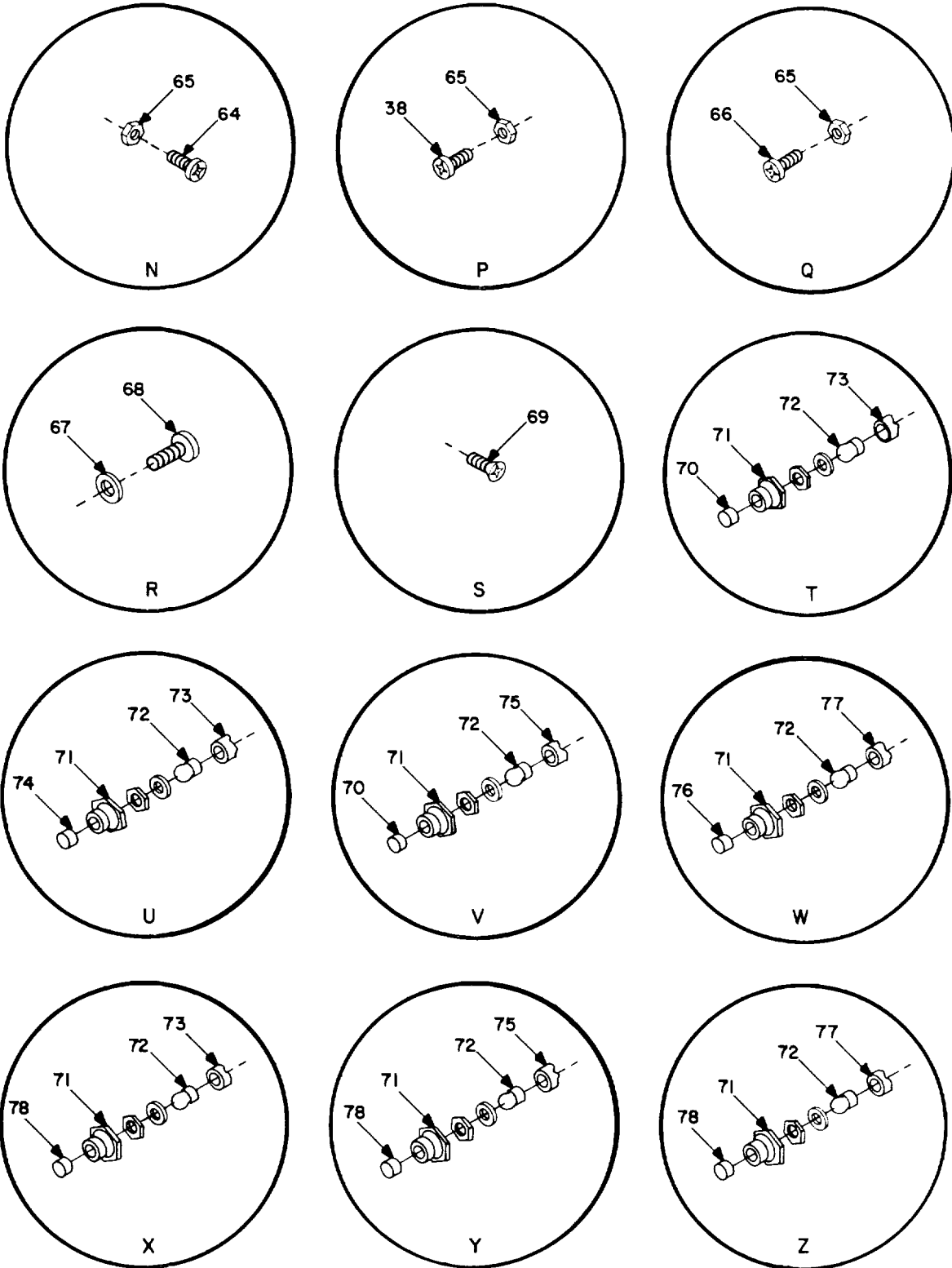
END OF FIGURE



SEE SHEETS 3 AND 4 FOR ENCIRCLED DETAILS.

EL4QV069

Figure 60. Test set, 10281449 (Sheet 1 of 2).

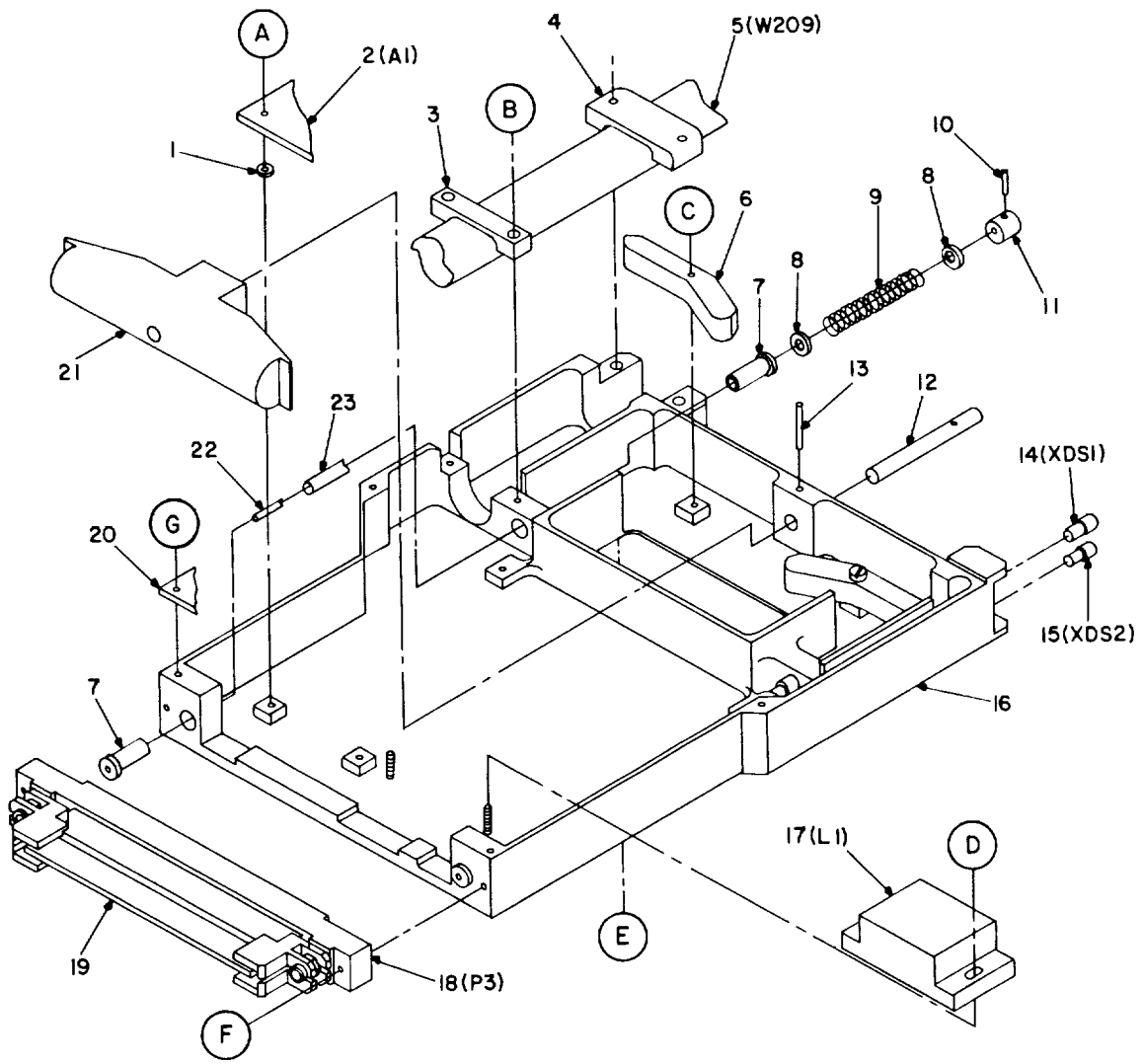


EL4QV072

Figure 60. Test set, 10281449 (Sheet 2 of 2).

SECTION II					
(1)	(2)	(3)	(4)	(5)	(6)
ITEM	SMR	FSCM	PART	DESCRIPTION AND USABLE ON CODES (UOC)	QTY
NO	CODE		NUMBER		
				GROUP 0103 TEST ASSY PLUG-IN UNIT WIRED,10281449	
				FIG.60	
5	PAODZ	18876	10284709-6	CABLE ASSEMBLY, SPEC.....	1
70	PAOZZ	81349	M22885/24-04	LENS, SWITCH ACTUATI.....	2
72	PAOZZ	13973	865018-0010	LAMP, INCANDESCENT.....	27
74	XBOZZ	13973	595876-003	LENS, RED.....	2
76	PAOZZ	13973	595876-002	LENS, WHITE.....	3
78	XBOZZ	13973	595876-001	LENS, YELLOW.....	20

END OF FIGURE



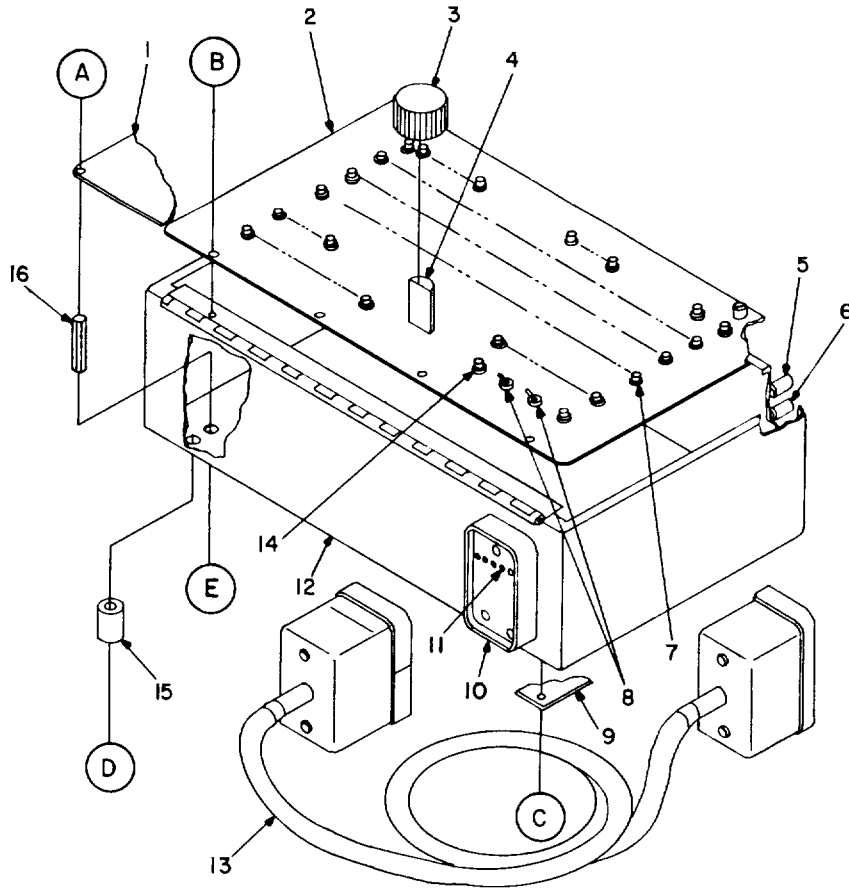
SEE SHEET 2 OF 2 FOR ENCIRCLED DETAILS

EL4QV081

Figure 69. Probe assy, 10285061.

SECTION II					
(1)	(2)	(3)	(4)	(5)	(6)
ITEM	SMR	FSCM	PART	DESCRIPTION AND USABLE ON CODES (UOC)	QTY
NO	CODE		NUMBER		
				GROUP 03 PROBE ASSY, TEST SET W209 10285061	
				FIG.69	
14	PAOZZ	96906	MS90308-5	LIGHT, INDICATOR	1
15	PAOZZ	96906	MS90308-2	LIGHT, INDICATOR	1

END OF FIGURE



SEE SHEET 2 OF 2 FOR ENCIRCLED DETAILS.

EL4QV087

Figure 73. Display box, TE113980.

SECTION II					
(1)	(2)	(3)	(4)	(5)	(6)
ITEM	SMR	FSCM	PART	DESCRIPTION AND USABLE ON CODES (UOC)	QTY
NO	CODE		NUMBER		
				GROUP 05 MTS TEST AID ASSY, TE113980	
				FIG.73	
1	PAOLL	13973	TE113987	CIRCUIT CARD ASSEMB	1
7	PAOZZ	21008	2L5W-PTL-5L-5/15	LIGHT, INDICATOR	108
13	PAOHH	13973	TE113988	CABLE ASSEMBLY, SPEC.....	1

END OF FIGURE

NATIONAL STOCK NUMBER AND PART NUMBER INDEX

NATIONAL STOCK NUMBER INDEX

STOCK NUMBER	FIG.	ITEM	STOCK NUMBER	FIG.	ITEM
6210-00-143-6704	69	14	5999-01-034-7327	1	25
6210-00-183-0655	69	15	5999-01-034-7328	1	37
5895-00-349-5941	1	30	7021-01-041-4533	55	3
5895-00-349-5969	1	11	6210-01-050-9706	60	70
5895-00-349-5970	1	14	1430-01-060-0506	60	76
5895-00-349-5974	1	15	6210-01-068-1935	59	11
5895-00-349-5976	1	27	5805-01-127-5872	73	1
5895-00-349-5989	1	12	5805-01-130-7611	73	13
5895-00-349-5993	1	13	6625-01-136-9917	1	70
5895-00-349-5997	1	29	5805-01-147-9565	1	69
5895-00-349-6024	1	31			
6240-00-433-7706	60	72			
5895-00-534-4313	1	20			
7021-01-011-2448	1	10			
1430-01-033-1031	60	5			
1430-01-033-1072	1	68			
1430-01-033-1082	1	32			
1430-01-033-4124	1	41			
1430-01-033-4135	1	40			
1430-01-033-4140	1	54			
5999-01-034-1452	1	49			
5999-01-034-2397	1	55			
5999-01-034-2398	1	56			
5999-01-034-2399	1	57			
5999-01-034-2400	1	58			
5999-01-034-2401	1	59			
5999-01-034-2403	1	61			
5999-01-034-2404	1	62			
5999-01-034-2405	1	18			
5999-01-034-2406	1	21			
5999-01-034-2407	1	23			
5999-01-034-2408	1	26			
5999-01-034-2409	1	28			
5999-01-034-2410	1	38			
5999-01-034-2411	1	42			
5999-01-034-2412	1	43			
5999-01-034-2414	1	45			
5999-01-034-2415	1	46			
5999-01-034-2416	1	47			
5999-01-034-2417	1	48			
5999-01-034-2418	1	50			
5999-01-034-2419	1	51			
5999-01-034-2421	1	53			
5999-01-034-3128	1	22			
5999-01-034-3129	1	33			
5999-01-034-3130	1	34			
5999-01-034-3131	1	35			
5999-01-034-3132	1	36			
5999-01-034-3133	1	39			
5999-01-034-6394	1	24			

**NATIONAL STOCK NUMBER AND PART NUMBER INDEX
PART NUMBER INDEX**

FSCM	PART NUMBER	STOCK NUMBER	FIG.	ITEM
96906	MS90308-2	6210-00-183-0655	69	15
96906	MS90308-5	6210-00-143-6704	69	14
81349	M22885/24-04	6210-01-050-9706	60	70
13973	TE113980	5805-01-147-9565	1	69
13973	TE113987	5805-01-127-5872	73	1
13973	TE113988	5805-01-130-7611	73	13
04655	02-510843	6625-01-136-9917	1	70
13973	10281602		1	16
13973	10281606		1	17
13973	10281780		1	19
18876	10281784	1430-01-033-4140	1	54
18876	10281785	1430-01-033-4124	1	41
18876	10282752	1430-01-033-4135	1	40
18876	10282771	5999-01-034-2397	1	55
18876	10282772	5999-01-034-2398	1	56
18876	10282773	5999-01-034-2399	1	57
18876	10282774	5999-01-034-2400	1	58
18876	10282775	5999-01-034-2401	1	59
18876	10282776		1	60
18876	10282777	5999-01-034-2403	1	61
18876	10282778	5999-01-034-2404	1	62
18876	10282779	5999-01-034-2405	1	18
18876	10282780	5999-01-034-2406	1	21
18876	10282781	5999-01-034-3128	1	22
18876	10282782	5999-01-034-2407	1	23
18876	10282783	5999-01-034-6394	1	24
18876	10282784	5999-01-034-7327	1	25
18876	10282785	5999-01-034-2408	1	26
18876	10282786	5999-01-034-2409	1	28
18876	10282787	5999-01-034-3129	1	33
18876	10282788	5999-01-034-3130	1	34
18876	10282789	5999-01-034-3131	1	35
18876	10282790	5999-01-034-3132	1	36
18876	10282791	5999-01-034-7328	1	37
18876	10282792	5999-01-034-2410	1	38
13973	10282793	5999-01-034-3133	1	39
18876	10282794	5999-01-034-2411	1	42
18876	10282795	5999-01-034-2412	1	43
18876	10282796		1	44
18876	10282797	5999-01-034-2414	1	45
13973	10282798	5999-01-034-2415	1	46
18876	10282799	5999-01-034-2416	1	47
18876	10282800	5999-01-034-2417	1	48
18876	10282801	5999-01-034-1452	1	49
18876	10282802	5999-01-034-2418	1	50
18876	10282803	5999-01-034-2419	1	51
18876	10282804		1	52
18876	10282805	5999-01-034-2421	1	53
18876	10283505	1430-01-033-1082	1	32
13973	10283518		19	1
13973	10283519		40	1

**NATIONAL STOCK NUMBER AND PART NUMBER INDEX
PART NUMBER INDEX**

FSCM	PART NUMBER	STOCK NUMBER	FIG.	ITEM
18876	10283578		18	9
18876	10284709-6	1430-01-033-1031	60	5
13973	10284883-1		1	5
18876	10285061	1430-01-033-1072	1	68
13973	126543-100	7021-01-041-4533	55	3
13973	126649-101		1	6
13973	126650-102		1	7
21008	2L5W-PTL-5L-5/15		73	7
13973	587100-102	7021-01-011-2448	1	10
13973	587102-102	5895-00-349-5969	1	11
13973	587103-102	5895-00-349-5974	1	15
13973	587104-102	5895-00-349-5970	1	14
13973	587105-102	5895-00-349-5993	1	13
13973	587106-102	5895-00-349-5941	1	30
13973	587108-102	5895-00-349-5997	1	29
13973	587117-102	5895-00-349-5989	1	12
13973	587118-100	5895-00-534-4313	1	20
13973	587119-100	5895-00-349-5976	1	27
13973	587128-100	5895-00-349-6024	1	31
13973	595876-001		60	78
13973	595876-002	1430-01-060-0506	60	76
13973	595876-003		60	74
13973	865018-0010	6240-00-433-7706	60	72
13973	865380-0001	6210-01-068-1935	59	11
13973	867088-002		55	54

RECOMMENDED CHANGES TO EQUIPMENT TECHNICAL PUBLICATIONS



THEN... JOT DOWN THE DOPE ABOUT IT ON THIS FORM, CAREFULLY TEAR IT OUT, FOLD IT AND DROP IT IN THE MAIL!

SOMETHING WRONG WITH THIS PUBLICATION?

FROM: (PRINT YOUR UNIT'S COMPLETE ADDRESS)

DATE SENT

PUBLICATION NUMBER

PUBLICATION DATE

PUBLICATION TITLE

BE EXACT... PIN-POINT WHERE IT IS

PAGE NO.

PARA-GRAPH

FIGURE NO.

TABLE NO.

IN THIS SPACE TELL WHAT IS WRONG AND WHAT SHOULD BE DONE ABOUT IT:

TEAR ALONG PERFORATED LINE

PRINTED NAME, GRADE OR TITLE, AND TELEPHONE NUMBER

SIGN HERE:

DA FORM 2028-2 JUL 79

PREVIOUS EDITIONS ARE OBSOLETE.

P.S.—IF YOUR OUTFIT WANTS TO KNOW ABOUT YOUR RECOMMENDATION MAKE A CARBON COPY OF THIS AND GIVE IT TO YOUR HEADQUARTERS.

